



Prolactin action in the medial preoptic area is necessary for postpartum maternal nursing behavior

Rosemary S. E. Brown^{a,b}, Mari Aoki^c, Sharon R. Ladyman^{a,b,d}, Hollian R. Phillipps^{a,b}, Amanda Wyatt^c, Ulrich Boehm^c, and David R. Grattan^{a,b,d,1}

^aCentre for Neuroendocrinology, University of Otago, Dunedin 9054, New Zealand; ^bDepartment of Anatomy, School of Biomedical Sciences, University of Otago, Dunedin 9054, New Zealand; ^cExperimental Pharmacology, Center for Molecular Signaling (PZMS), Saarland University School of Medicine, 66421 Homburg, Germany; and ^dMaurice Wilkins Centre for Molecular Biodiscovery, Auckland 1010, New Zealand

Edited by Bruce S. McEwen, The Rockefeller University, New York, NY, and approved August 28, 2017 (received for review May 15, 2017)

Pregnancy hormones, such as prolactin, sensitize neural circuits controlling parental interactions to induce timely activation of maternal behaviors immediately after parturition. While the medial preoptic area (MPOA) is known to be critical for maternal behavior, the specific role of prolactin in this brain region has remained elusive. Here, we evaluated the role of prolactin action in the MPOA using complementary genetic strategies in mice. We characterized prolactin-responsive neurons within the MPOA at different hormonal stages and delineated their projections in the brain. We found that MPOA neurons expressing prolactin receptors (Prlr) form the nexus of a complex prolactin-responsive neural circuit, indicating that changing prolactin levels can act at multiple sites and thus, impinge on the overall activity of a distributed network of neurons. Conditional KO of Prlr from neuronal subpopulations expressing the neurotransmitters GABA or glutamate within this circuit markedly reduced the capacity for prolactin action both in the MPOA and throughout the network. Each of these manipulations, however, produced only subtle impacts on maternal care, suggesting that this distributed circuit is robust with respect to alterations in prolactin signaling. In contrast, acute deletion of Prlr in all MPOA neurons of adult female mice resulted in profound deficits in maternal care soon after birth. All mothers abandoned their pups, showing that prolactin action on MPOA neurons is necessary for the normal expression of postpartum maternal behavior in mice. Our data establish a critical role for prolactin-induced behavioral responses in the maternal brain, ensuring survival of mammalian offspring.

maternal behavior | prolactin | prolactin receptor | medial preoptic area

Maternal care is critical to survival of dependent offspring in mammals. Seminal work from Rosenblatt (1), published 50 y ago, showed that maternal behavior can be exhibited in ovariectomized, hypophysectomized rats, suggesting an underlying neural basis that was not dependent on hormonal inputs. Subsequent studies have characterized a complex neural circuitry controlling parental interactions (2, 3), with distributed sites mediating different components of the behavior (4). While the neural circuit controlling maternal behavior is not thought to be dependent on hormonal inputs, it is clear that pregnancy hormones, particularly rising levels of estradiol, oxytocin, prolactin, and placental lactogen, coupled with an abrupt decrease in progesterone can sensitize the underlying circuitry to induce timely activation of maternal behaviors immediately after parturition (5). The medial preoptic area (MPOA) forms a critical nexus (2, 3), integrating a range of hormonal and sensory inputs into the maternal circuit.

Within the complex hormonal milieu of pregnancy, the specific role of prolactin in maternal behavior has remained elusive. This is largely because prolactin and the related placental lactogen have an obligate role in sustaining ovarian progesterone production during pregnancy in rodents (6), meaning that traditional approaches, such as pharmacological inhibition of prolactin secretion and antagonism or KO of prolactin receptors (Prlr), will terminate the pregnancy, making study of postpartum maternal behavior impossible. Circumvention of this issue has usually necessitated investigation of the effects of prolactin on maternal behaviors in artificial, nonpregnant models. For example, virgin

Prlr KO mice (*Prlr*^{-/-}) show a deficit in pup-induced maternal care (7), but these mice are infertile because of the absence of luteotrophic support of the ovary (8), preventing investigation of normal postpartum maternal behavior. Similarly, the key evidence showing that prolactin is involved in the initiation of maternal care has come from studies administering hormones to nonpregnant rats (9, 10). Importantly, these studies have identified the MPOA as a major region where prolactin action can facilitate the onset of maternal behavior in nonpregnant females (10).

To specifically evaluate the role of prolactin action in the MPOA in maternal behavior in the context of a normal pregnancy, we used complementary genetic strategies in mice. We characterized prolactin-responsive neurons within the MPOA at different hormonal stages and delineated their projections in the brain. Most (75%) of the MPOA neurons expressing c-Fos during maternal behavior are GABAergic (3), and we have previously observed extensive Prlr expression on GABAergic neurons in this region (11). In addition, this region is also rich in glutamatergic neurons (although only a small proportion of these express c-Fos during maternal behavior) (3). Hence, we next generated conditional KO animals and deleted Prlr in GABA and/or glutamate neurons in the brain, while retaining Prlr expression in peripheral reproductive tissues. This allowed us to evaluate maternal behavior in the context of a normal pregnancy but with markedly reduced capacity of the maternal circuits to sense prolactin. Finally, we specifically evaluated the role of Prlr in the MPOA using a viral approach to acutely ablate Prlr specifically within this region in the adult brain, while leaving Prlr expression in other parts of the maternal circuit intact.

Results

The MPOA Forms the Nexus of a Prolactin-Sensitive Neural Network. The MPOA contains a large number of neurons expressing *Prlr* mRNA (12). Prolactin typically activates transcriptional responses through the JAK/STAT signal transduction pathway mediated by

Significance

Prolactin-responsive neurons in the medial preoptic area project widely throughout the brain. After targeted deletion of prolactin receptors in the preoptic area of adult female mice, mice were able to get pregnant and give birth normally. However, mothers lacking prolactin receptors in the medial preoptic area abandoned their litters soon after birth, establishing a critical role for prolactin/placental lactogen action in this area for establishment and maintenance of normal parental care.

Author contributions: R.S.E.B., U.B., and D.R.G. designed research; R.S.E.B., M.A., S.R.L., H.R.P., and A.W. performed research; U.B. and D.R.G. contributed new reagents/analytic tools; R.S.E.B., M.A., S.R.L., H.R.P., A.W., and D.R.G. analyzed data; and R.S.E.B., M.A., U.B., and D.R.G. wrote the paper.

The authors declare no conflict of interest.

This article is a PNAS Direct Submission.

Freely available online through the PNAS open access option.

¹To whom correspondence should be addressed. Email: dave.grattan@otago.ac.nz.

This article contains supporting information online at www.pnas.org/lookup/suppl/doi:10.1073/pnas.1708025114/-DCSupplemental.

phosphorylation of STAT5 (pSTAT5) (13). We found that the number of MPOA neurons showing prolactin-induced pSTAT5 was relatively low in nonpregnant mice but markedly increased during lactation (Fig. 1A). These data suggest considerable plasticity in the MPOA during lactation, with enhanced transcriptional responses to prolactin, although there is no change in *Prlr* mRNA expression in this region at this time (14).

To analyze the role of prolactin-responsive neurons specifically in the MPOA, we next developed a mouse line in which Cre recombinase is expressed under the control of the *Prlr* promoter using an internal ribosome entry site (IRES) (15). We inserted the IRES-Cre construct immediately downstream of exon 10 of the *Prlr* gene, resulting in Cre expression in cells that express the long form of the *Prlr* (*Prlr*-iCre). We then crossed the *Prlr*-iCre animals with mice expressing a Cre-dependent τ GFP reporter (ROSA26-CAGS- τ GFP; eR26- τ GFP) (16) to fluorescently label prolactin-responsive neurons. Because τ GFP associates with microtubules, it effectively labels neuronal processes of *Prlr* neurons as well as their cell bodies. We found that τ GFP expression was restricted to areas known to express *Prlr* in the adult brain (12). In particular, we detected high levels of τ GFP-positive cell bodies in the MPOA, bed nucleus of the stria terminalis (BNST), paraventricular nucleus (PVN), ventromedial hypothalamic nucleus (VMH), arcuate nucleus (ARN), and medial amygdala (MeA) (Fig. 1 and Fig. S1), all

regions that have previously been implicated in the neural circuitry governing parental behavior (4, 5). We also detected τ GFP-positive fibers throughout the brain, including a number of areas, such as the supramammillary region and ventral tegmental area (VTA), that were devoid of *Prlr*-expressing cell bodies (12).

To specifically trace the projections of MPOA *Prlr* neurons, we stereotaxically injected a recombinant adeno-associated virus (AAV) encoding Cre-dependent mCherry into this brain area. mCherry is anterogradely transported within neuronal processes labeling axons of the Cre-expressing cells. After unilateral AAV injection into the MPOA of *Prlr*-iCre/eR26- τ GFP mice, we found that a subset of the *Prlr* neurons (green in Fig. 1B) expressed mCherry (red in Fig. 1B). While mCherry-positive cell bodies were restricted to the side of the injection, we identified extensive mCherry-positive projections from the MPOA *Prlr* neurons (Fig. 1), predominantly but not exclusively on the ipsilateral side (quantified in Table S1). Many of the major projections connected to regions that also showed high levels of τ GFP in cell bodies, indicating prolactin-responsive neurons, such as the BNST, PVN, ARN, and VMH (Fig. 1, Figs. S1 and S2, and Table S1). Importantly, few of these areas showed mCherry-positive staining in the cell bodies, which would have been indicative of retrograde transport of the marker, suggesting that the observed fiber staining was localized almost exclusively in projections from the MPOA. Taken together,

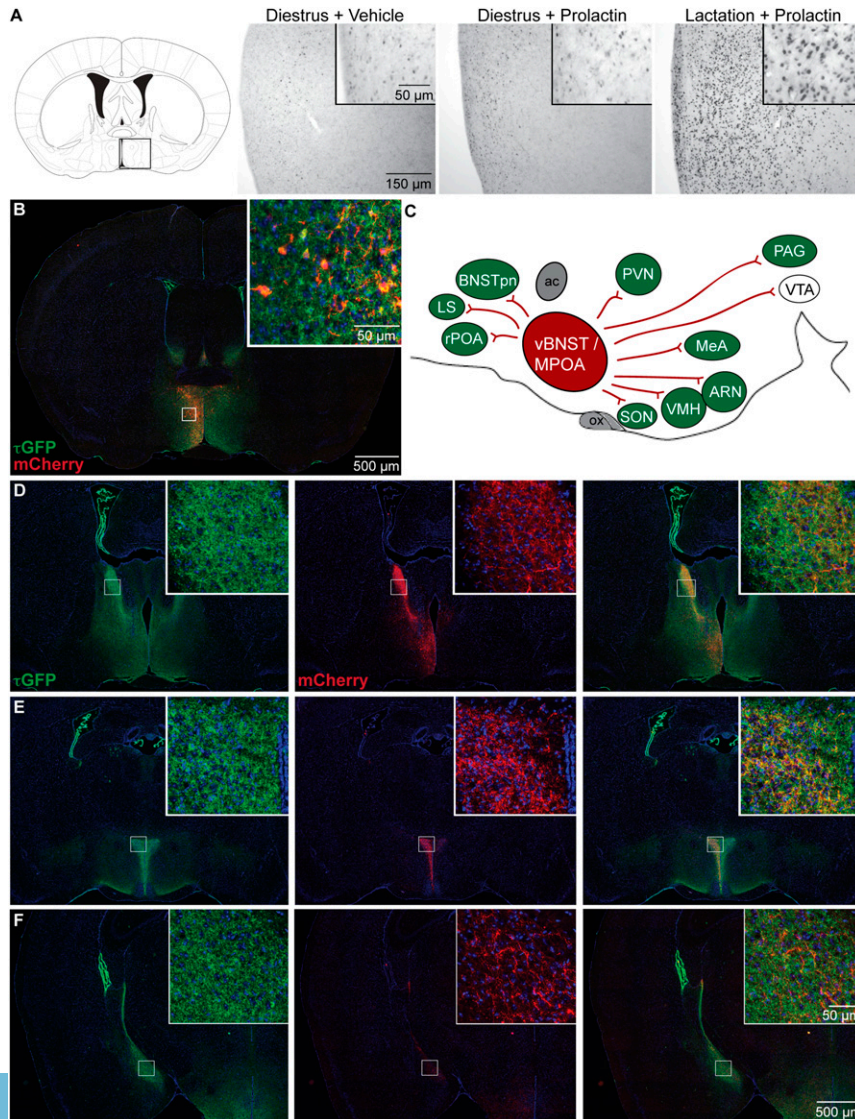


Fig. 1. A prolactin-sensitive neural network centered on the medial preoptic area (MPOA). (A) Changes in prolactin-induced signal transduction in *Prlr*-expressing MPOA neurons. Photomicrographs show immunohistochemical labeling of pSTAT5 (black nuclear staining) after prolactin administration in diestrous nonlactating mice and day 7 lactating mice compared with vehicle-treated controls. Prolactin induces widespread and intensive pSTAT5 labeling in lactating mice but not in diestrous mice. (B–F) Distribution of projections from *Prlr*-expressing neurons in the MPOA. *Prlr*-iCre/eR26- τ GFP mice received a unilateral injection of AAV5-EF1a-DIO-hChr2(H134R)-mCherry-WPRE-pA into the MPOA to drive Cre-dependent expression of mCherry specifically in the MPOA. Images were captured using a 10 \times objective using a Zeiss Axio Imager2 microscope with a motorized stage, with multiple images combined to form a composite image using the MozaiX module in the Axiovision software. (B) Site of the injection into the MPOA, with *Prlr*-expressing cells being labeled with τ GFP (green) and a subset of *Prlr*-expressing neurons in the MPOA on one side expressing mCherry (red). (C) Schematic representation of mCherry-labeled projections from the MPOA in the sagittal plane, with regions containing *Prlr*-expressing cells colored in green and regions lacking *Prlr*-expressing cell bodies in white. ac, anterior commissure; ARN, arcuate nucleus; BNSTpn, bed nucleus of the stria terminalis principle nucleus; LS, lateral septum; MeA, medial amygdala; ox, optic chiasm; PAG, periaqueductal gray; PVN, paraventricular nucleus; rPOA, rostral preoptic area; SON, supraoptic nucleus; vBNST, ventral bed nucleus of the stria terminalis; VTA, ventral tegmental area. (D–F) Representative sections illustrating the distribution of τ GFP labeling showing *Prlr* expression (green), mCherry-positive projections of MPOA prolactin receptor-expressing cells (red), and the composite images through the forebrain (Figs. S1 and S2 and Table S1).

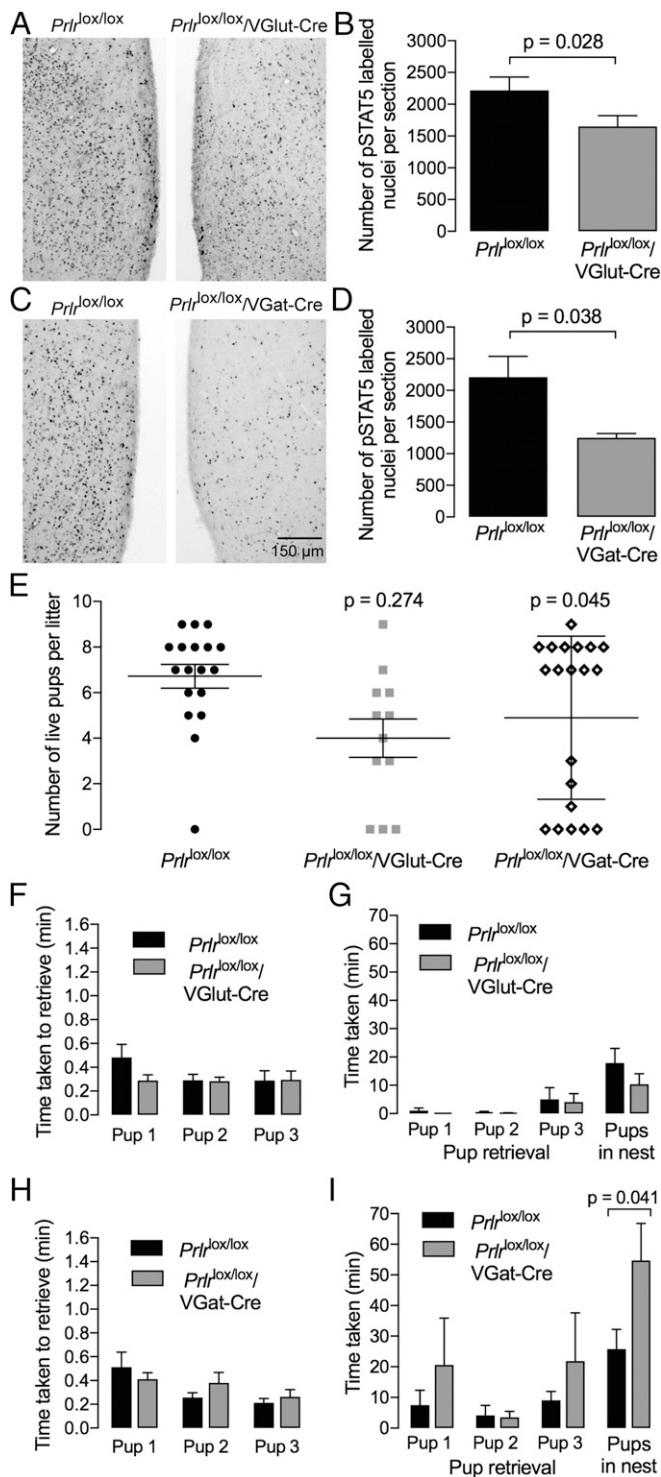


Fig. 2. Conditional deletion of the *Prlr* from glutamate or GABA neurons. Prolactin-induced pSTAT5 (black nuclear staining) in the MPOA showing functional loss of *Prlr* signaling in the glutamate-specific *Prlr* KO mice (*Prlr^{lox/lox}/VGlut-Cre*; A) and GABA-specific *Prlr* KO mice (*Prlr^{lox/lox}/VGat-Cre*; C) compared with the Cre-negative controls (*Prlr^{lox/lox}*). The numbers of pSTAT5-positive cells in this region are quantified in B ($n = 8$) and D ($n = 4$). Note that each genotype exhibits a partial loss of prolactin-responsive cells ($P < 0.05$). Fig. S3 shows quantification of numbers of pSTAT5 neurons in other brain regions in each genotype. E shows the effect of conditional KO of the *Prlr* on pup survival. While the majority of animals were able to successfully raise their litters, a significantly larger number of animals exhibited a loss of their litters in the *Prlr^{lox/lox}/VGat-Cre* mice ($P < 0.05$). F–I show effect of conditional deletion of *Prlr* in GABA (*Prlr^{lox/lox}/VGat-Cre*) or glutamate (*Prlr^{lox/lox}/VGlut-Cre*) neurons on

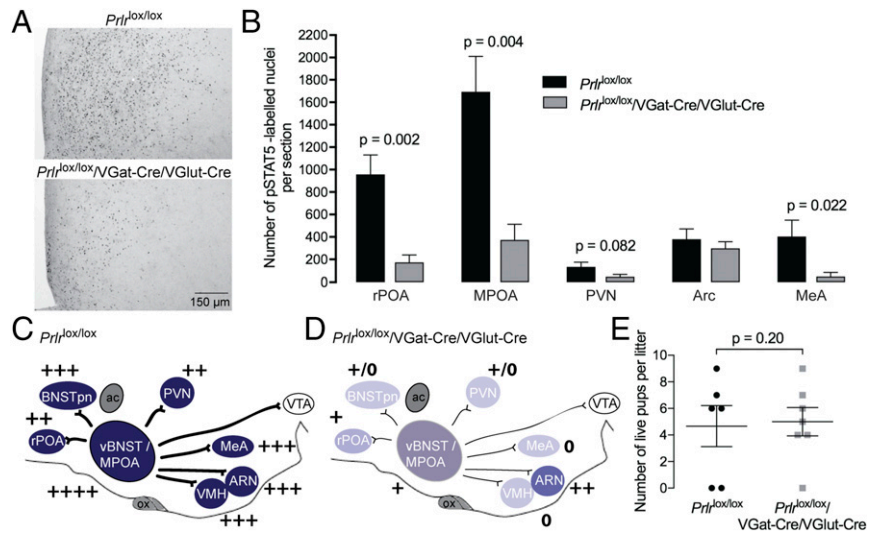
these data suggest that MPOA *Prlr*-expressing neurons form the nexus of a complex prolactin-responsive neural circuit, indicating that changing prolactin levels may significantly impinge on the overall activity of a distributed network of neurons.

Conditional KO Mice Lacking Prolactin Receptors in Glutamate and/or GABA Neurons Display Mild Perturbations of Maternal Behaviors. To investigate the functional role of prolactin in GABAergic and/or glutamatergic neuronal populations, we deleted the *Prlr* gene from GABA and/or glutamate neurons using *VGat-Cre* and *VGlut2-Cre* mouse strains (17) in combination with *Prlr^{lox/lox}* animals (11). In *Prlr^{lox/lox}/VGlut2-Cre* mice, there was a 25% loss of prolactin-induced pSTAT5 in the MPOA ($P = 0.028$), confirming successful deletion of *Prlr* in glutamate neurons in this area (Fig. 2 A and B). In addition, these animals showed an almost complete loss of prolactin-induced pSTAT5 in the PVN and VMH, suggesting that all prolactin-responsive neurons in these regions are glutamatergic. Conditional deletion of *Prlr* in GABA neurons (*Prlr^{lox/lox}/VGat-Cre*) resulted in a 50% decrease in prolactin-induced pSTAT5 in the MPOA ($P = 0.038$) (Fig. 2 C and D). These mice also had an almost total loss of pSTAT5 in the MeA as well as reduced STAT5 activation in the ARN and BNST. The overall change in numbers of neurons responding to prolactin in each of the prolactin-responsive nuclei in the maternal circuit is illustrated schematically in Fig. S3. Both conditional KO strains were fertile and able to carry a pregnancy to term, although an increased number of the animals abandoned their litters (two or fewer pups alive on day 3 of lactation) compared with controls. While this difference for *Prlr^{lox/lox}/VGlut2-Cre* mice (3 of 12 abandoned litters) was not significantly different from controls (1 of 18; $P = 0.274$), *Prlr^{lox/lox}/VGat-Cre* mice showed higher levels of litter loss (7 of 20; $P = 0.045$) (Fig. 2 E). Nevertheless, the majority of animals in each genotype was able to maintain their litters. In mice with surviving litters, we completed a pup retrieval experiment both in the home cage on day 3 postpartum and in a novel cage [a slightly more rigorous test of maternal behavior (18)] on day 5 postpartum. There was no significant effect of loss of *Prlr* in either GABA or glutamate neurons on pup retrieval in the home cage of postpartum female mice (Fig. 2 F and H). In the novel cage compared with the home cage, all mice took significantly longer to retrieve their pups and crouch over them in a newly constructed nest. *Prlr^{lox/lox}/VGlut2-Cre* mice were not significantly different from control animals in performing this task in the novel cage. In contrast, while *Prlr^{lox/lox}/VGat-Cre* exhibited normal retrieval of the pups, they took significantly longer to crouch over the pups and exhibit full maternal behavior ($P = 0.041$) (Fig. 2 G and I).

Combining both Cre alleles to generate mice lacking *Prlr* in both GABA and glutamate neurons resulted in approximately additive effects in terms of loss of prolactin responses. These animals had markedly reduced prolactin-induced pSTAT5 in the MPOA (~75%; $P = 0.004$) as well as almost total loss of responses in the PVN, VMH, and MeA (Fig. 3). Despite this, the animals were no worse off in terms of maternal behavior, and most of them were able to care for their litters. Importantly, however, none of the manipulations above generated a complete loss of *Prlr* throughout the circuit, raising the possibility that the few remaining prolactin-responsive neurons in the MPOA were sufficient to sustain maternal behavior that was only mildly impaired compared with controls.

pup retrieval in the home cage (F and H; $n = 8–12$) or in a novel cage (G and I; $n = 7–8$). Mothers were separated from their pups; then, three pups were placed into the cage, and the time taken to retrieve pups was recorded. Note the difference in scale on the y axis, with retrieval taking much longer in the novel cage. As there was no preformed nest in the novel cage, the final measure was a grouping of the three pups into a new “nest” formed during the performance of this task. There was no significant difference in pup retrieval time in the home cage for either group. In the novel cage, however, GABA-specific *Prlr* KO animals took significantly longer to complete the retrieval task ($P < 0.05$).

Fig. 3. Effect of conditional deletion of Prlr in both GABA and glutamate neurons. (A) Prolactin-induced pSTAT5 (black nuclear staining) in the MPOA showing functional loss of Prlr signaling in combined GABA and glutamate Prlr KO mice ($Prlr^{lox/lox}/VGat-Cre/VGlut-Cre$) together with quantification of the numbers of pSTAT5-positive cells in selected brain regions ($n = 4-5$). (B) Note the significant loss of prolactin-responsive cells in most brain regions. This is represented schematically in the diagrams of the brain in the sagittal plane (C and D), with intensity of color representing levels of Prlr expression and + symbols representing numbers of prolactin-induced pSTAT5 neurons detected in each region. Note the marked loss of Prlr expression throughout that neural network. E shows pup survival measured on day 3 of lactation. Although some mothers abandoned their litters in each group, there was no significant effect of Prlr deletion on postpartum maternal behavior compared with Cre-negative controls. ac, anterior commissure; ARN, arcuate nucleus; BNSTpn, bed nucleus of the stria terminalis principle nucleus; LS, lateral septum; MeA, medial amygdala; ox, optic chiasm; PAG, periaqueductal gray; PVN, paraventricular nucleus; rPOA, rostral preoptic area; SON, supraoptic nucleus; vBNST, ventral bed nucleus of the stria terminalis; VTA, ventral tegmental area.



Acute Deletion of Prolactin Receptors from the MPOA in Adults Abolishes Maternal Nursing Behavior.

To test this hypothesis and specifically investigate the role of prolactin action in postpartum maternal behavior, we used an AAV to deliver Cre recombinase into the MPOA of adult female $Prlr^{lox/lox}$ mice (11). The $Prlr^{lox/lox}$ construct is designed such that Cre-mediated recombination will activate GFP expression and thus, report successful Prlr deletion (Fig. 4). AAV-Cre injection into the MPOA of $Prlr^{lox/lox}$ mice completely removed functional prolactin responses from this region (Fig. 4). The effect was highly localized, as there was little or no expression of GFP in the nearby PVN, and prolactin-induced pSTAT5 was unaffected in that and other nuclei (Fig. S4). Three days after injection, animals were mated and monitored throughout pregnancy. There was no effect of treatment on the time taken to get pregnant or the duration of pregnancy (Fig. S4). Animals gave birth to normal-sized litters and initiated the normal pup-directed activities (19), retrieving the pups to a nest, cleaning and grooming the pups, and eating the placenta. Having initiated these behaviors, however, the animals failed to establish full maternal care defined as crouching over the pups in a nest and assuming an arched back posture (kyphosis) to facilitate nursing. The animals failed to crouch over the pups, and over the course of the next 24 h, all of the mothers lacking Prlr in the MPOA abandoned their litters, resulting in death of all pups (Fig. 4). There was no evidence that the $Prlr^{lox/lox}/AAV-Cre$ animals ever suckled their young after birth. When examined in the first 6 h after birth (in the cross-fostering study; see below), the pups showed no signs of a milk band in their stomachs, and the mothers did not have elongated nipples or matted fur around the nipples, the normal signs of suckling seen in the controls. By contrast, control animals injected with AAV-Cre or saline-injected $Prlr^{lox/lox}$ animals showed normal maternal behavior and successfully raised their pups. Cross-fostering of pups confirmed a deficit in maternal care rather than in pup viability, with pups from two $Prlr^{lox/lox}/AAV-Cre$ litters surviving after cross-fostering to control $Prlr^{lox/lox}$ dams. Conversely, pups from control $Prlr^{lox/lox}$ dams did not survive after cross-fostering onto $Prlr^{lox/lox}/AAV-Cre$ dams, despite apparently normal retrieval (Fig. S5). Again, after initiation of normal pup-directed behaviors, the animals never established full maternal care. These data show that prolactin (or placental lactogen) action in the MPOA of the postpartum female, via the Prlr, is absolutely essential for normal expression of maternal care.

Discussion

Our data establish a critical role for prolactin in mammalian reproduction that is more comprehensive than simply milk production.

Prolactin-induced behavioral responses in the maternal brain are equally important in ensuring survival of mammalian offspring.

Maternal behavior can be broadly classified into two components that are mediated by separate but interacting neuronal circuits (4, 5). One circuit, involving structures such as the MeA and VMH, controls pup-directed avoidance and aggression. This must be inactivated to promote attraction and retrieval of pups. A second circuit, focused around the MPOA, is associated with the expression of parental care and must be activated to promote actions, such as nest formation, pup retrieval, grooming, and nursing of the pups. Our data suggest that prolactin can influence both of these circuits, with Prlr expression detected in multiple regions within these distributed neural networks. Given this widespread distribution of Prlr, it was surprising that conditional deletion of Prlr in GABAergic and/or glutamatergic neurons, which markedly reduced the number of neurons responding to prolactin, had only a subtle effect on maternal behavior. In particular, pup retrieval was relatively normal after all manipulations, raising the possibility that this function may be independent of prolactin action in mice. It was noteworthy that the most significant impact of the conditional deletion experiments came when Prlr were deleted in GABAergic neurons, which are the largest population of neurons normally activated during expression of maternal behavior (3). Collectively, however, the relatively subtle effects suggest that the maternal behavior circuit is very robust and that prolactin action within this circuit is somewhat redundant under normal conditions. This might be a consequence of the distributed nature of the network, with prolactin able to act on the circuit at multiple sites, or developmental compensation after constitutive loss of Prlr. In contrast to the subtle effects seen in the conditional KOs, complete deletion of Prlr from the MPOA in the adult profoundly impaired maternal nursing behavior. Whether similar adult-onset KO of Prlr in the other parts of the distributed network might have specific effects on different components of maternal behavior remains to be determined.

When pups from the mothers lacking Prlr in the MPOA were cross-fostered onto control mothers, they were able to suckle and appeared completely normal, showing that the deficit was a maternal one. One possibility is that specific deletion of Prlr in the MPOA caused a failure of lactation or milk ejection and that the mothers abandoned the litters because of an inability to feed the pups. The ability of these animals to maintain a pregnancy, however, suggests that prolactin (and placental lactogen) was adequate to sustain the corpus luteum (6) and therefore, likely sufficient for mammary gland development. Similarly, the ability

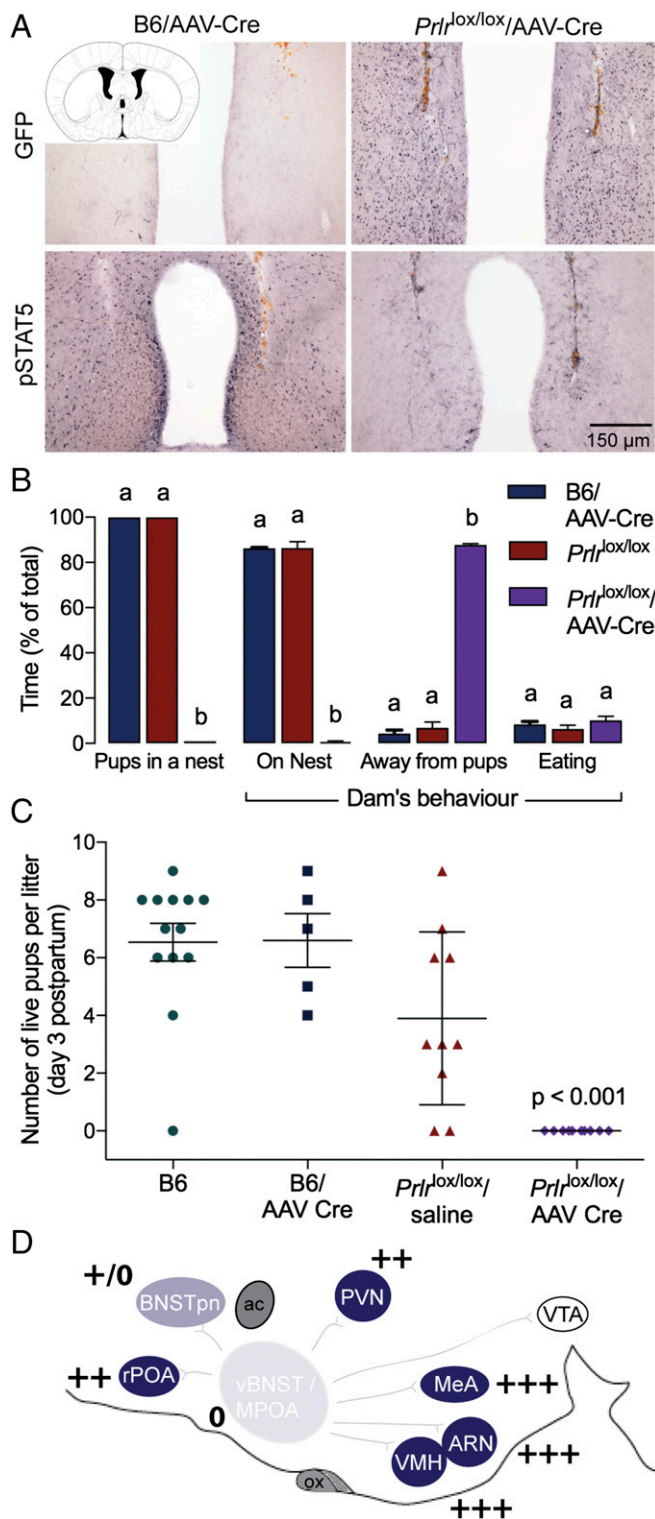


Fig. 4. Effect of *Prlr* deletion from the MPOA on postpartum maternal behavior. (A) Bilateral administration (injection tracts are labeled brown) of AAV2-CMV-PI-Cre-rBG into the MPOA of adult *Prlr^{lox/lox}* female mice resulted in extensive GFP and complete absence of pSTAT5 labeling, indicating successful deletion of the *Prlr* gene. GFP labeling was absent, and high levels of pSTAT5 labeling were observed in virus-injected WT lactating mice. (B) Video recordings 6–24 h postpartum revealed that maternal behavior was severely disrupted in mice with MPOA-specific *Prlr* deletion (*Prlr^{lox/lox}/AAV-Cre*; $n = 4$) compared with control groups of AAV-Cre-injected WT C57BL/6J mice (B6/AAV-Cre; $n = 2$) and *Prlr^{lox/lox}* mice ($n = 4$), with pups scattered and dams spending no time at the nest or with pups. Different letters represent statistically different groups ($P < 0.01$).

of the animals to give birth normally suggests at least some level of function of the oxytocin system (20), meaning that milk ejection would likely have occurred had the animals suckled. In addition to maternal behavior, the MPOA has a number of important homeostatic roles, including thermoregulation, sleep, and social reward (21, 22). Potentially, maternal behavior could be impacted if losing the influence of prolactin on these functions also impaired pregnancy-related adaptations in the maternal brain. While these possibilities warrant additional investigation, the observation that the animals never properly initiated nursing of the pups suggests that the observed deficits were more likely to directly result from a lack of prolactin input into the circuitry controlling maternal behavior.

The MPOA has a critical role in linking the multiple regions involved in maternal behavior and in integrating the various hormonal and sensory inputs that influence the behavior (4, 5). A number of studies have traced connections from the MPOA to other structures involved in the maternal circuit, and have demonstrated a major output of the system to midbrain effector regions, such as the VTA (and nucleus accumbens) (23, 24). Our data show that some of these projections are derived from prolactin-responsive cells. After deletion of *Prlr* in the MPOA in adult females, the mothers initially showed appropriate pup-directed behavior, grooming the pups after birth and consuming the placenta. However, these interactions were not sustained, and the mothers never exhibited full maternal care and abandoned their pups within 24 h of birth. Thus, it seems that prolactin action in the MPOA is necessary for the normal function of the maternal network, possibly altering the key output of the network to regions that reinforce the behavior (22). This might be mediated by prolactin itself but also by the closely related placental lactogens that act on the *Prlr* and are elevated in the blood throughout the second half of pregnancy (25). Importantly, unlike some recent reports that have used cell ablation approaches (26, 27) or blockade of neurotransmitter production (28, 29) to identify critical cell types mediating maternal behavior, in this model, the neuronal circuitry is completely intact. The profound deficit arises specifically from the lack of appropriate hormonal input into these circuits.

Methods

Animals. The generation and genotyping of *Prlr*-iCre and *Prlr^{lox/lox}* mice (11) are detailed elsewhere (*SI Methods*). *Prlr*-iCre mice were crossed with ROSA26-CAGS- τ GFP reporter animals (16), generating mice that express τ GFP specifically in *Prlr*-expressing neurons. VGat- and VGlut2-IRES-Cre mice, originally developed by Brad Lowell (17), were purchased from Jackson Labs [*Slc32a1^{tm2(cre)Lowl/Mwar}*] (stock no. 028862) and [*Slc17a6^{tm2(cre)Lowl/Mwar}*] (stock no. 028863), respectively]. These mice were crossed with our *Prlr^{lox/lox}* mice. As Cre-mediated inversion deletes the *Prlr* gene and knocks in EGFP in its place (11), EGFP expression in the brain was used as a marker for both successful recombination and for the normal pattern of receptor expression. Finally, double-Cre animals were generated initially by breeding male VGat-Cre +ve mice with female VGlut-Cre +ve mice. After a number of double-Cre males had been produced, the breeding strategy was changed to cross double-Cre male mice with homozygous *Prlr^{lox/lox}* females (*SI Methods*). Groups of WT C57BL/6J (B6) mice were used as additional control groups in some experiments. All mice were used as adults (8–14 wk) and were group-housed under conditions of controlled temperature ($22 \text{ }^\circ\text{C} \pm 1 \text{ }^\circ\text{C}$) and lighting (12-h light and 12-h dark cycles with lights on at 0600 hours), with ad libitum access to food and water. All animal experimental protocols were approved by the University of Otago or the University of Saarland animal ethics committee.

(C) No pups from *Prlr^{lox/lox}/AAV-Cre* dams survived beyond 2 d postpartum. (D) Schematic representation of levels of *Prlr* expression in the maternal circuit in the sagittal plane after AAV-Cre administration into the MPOA (using the same format as in Fig. 3). Note that *Prlr* deletion was highly localized to the site of injection apart from some loss of expression in regions immediately superior to the injection site surrounding the needle tract (Fig. S4). ac, anterior commissure; ARN, arcuate nucleus; BNSTpn, bed nucleus of the stria terminalis principle nucleus; LS, lateral septum; MeA, medial amygdala; ox, optic chiasm; PAG, periaqueductal gray; PVN, paraventricular nucleus; rPOA, rostral preoptic area; SON, supraoptic nucleus; vBNST, ventral bed nucleus of the stria terminalis; VTA, ventral tegmental area.

Stereotaxic Injections of AAV. Adult mice (8–12 wk old) were anesthetized with isoflurane and placed in a stereotaxic apparatus. For tract tracing experiments, Prlr-iCre/eR26- τ GFP females received unilateral 1- μ L injections of AAV5-EF1a-DIO-hChR2(H134R)-mCherry-WPRE-pA (5×10^{12} ; UNC Vector Core) into the MPOA. For gene KO experiments, Prlr^{lox/lox} animals received bilateral 1- μ L injections of AAV2-CMV-PI-Cre-rBG (2.27×10^{13} ; Penn Vector Core) into the MPOA. All injections were given at a rate of 100 nL/min, and the syringes were left in situ for 3 min before and 10 min after injections. Coordinates for the MPOA were 0.07 mm anterior to Bregma and 0.3 mm lateral to midline, and depth was adjusted for age (8 wk: 4.7-mm depth; 10 wk: 4.9-mm depth; 12 wk: 5.0-mm depth). A control group of WT C57BL/6J mice received bilateral AAV-Cre injections, and a control group of Prlr^{lox/lox} mice received saline injections.

Tract Tracing Experiments. Two to four weeks after viral injection, mice were anesthetized with ketamine and xylazine and perfused transcardially with 4% paraformaldehyde, and brains were prepared for immunohistochemistry for mCherry and τ GFP (SI Methods). Nuclei were visualized by Hoechst staining. Sections were imaged using the Axio Imager M2 microscope with AxioVision software (Zeiss) and then ImageJ. Images were split into single channels, regions of interest were assigned to individual brain regions, and percentages of each area occupied by mCherry-positive signal above threshold, as calculated by the Triangle method (30), were obtained (Table S1).

Monitoring of Maternal Behavior. Seventy-two hours after AAV-Cre injection, females were individually housed with a WT C57BL/6J male mouse. Successful mating was confirmed by the presence of a vaginal plug, the male was removed, and day of parturition was recorded as day 1 of lactation. Pup survival was monitored daily, and total number of live pups was recorded on day 3 of lactation. Maternal behavior in the home cages (with their own pups) was recorded 6–24 h after parturition in groups of Prlr^{lox/lox} ($n = 4$), B6/AAV-Cre ($n = 2$), and Prlr^{lox/lox}/AAV-Cre ($n = 4$) mice. The percentages of time that the dam spent over the pups in the nest, elsewhere in the cage, and eating were calculated during both the light and dark periods. The percentage of time that pups were gathered in a nest was also calculated. To evaluate whether any deficit in maternal care was caused by pup-related factors, pups from two Prlr^{lox/lox}/AAV-Cre mothers were cross-fostered onto Prlr^{lox/lox} control dams, with control pups placed with the KO mothers. Pups were collected as soon as possible after birth (within 6 h) and were checked for general health and the presence of milk bands

in their stomach. At the same time, the mothers were assessed for evidence of suckling (matted fur around the nipples and/or elongated nipples). Pups were then placed with the new mother and observed for the next 48 h. Pup retrieval behavior was tested in home cages on day 3 of lactation (SI Methods).

Immunohistochemistry. To evaluate Prlr expression in the MPOA of Prlr^{lox/lox} mice, brains were processed for the presence of EGFP immunoreactivity (to indicate Cre-dependent recombination in the Prlr^{lox/lox} mice and therefore, represent cells that expressed Prlr before recombination) and prolactin-induced pSTAT5 [a sensitive and reliable marker of activated Prlr (12)]. Pups were removed from dams on days 7–10 of lactation at 0900 hours, and at 1215 hours, dams were administered with ovine prolactin (5 mg/kg injection i.p.). Mice were anesthetized with sodium pentobarbital and perfused transcardially 45 min after prolactin administration with 4% paraformaldehyde. Brains were removed, postfixed for 1 h in the same fixative, and cryoprotected in 30% sucrose overnight. Three sets of 30- μ m-thick coronal sections through the forebrain from each animal were cut using a sliding microtome. One series of tissue each was used to examine pSTAT5 and EGFP expression by chromagen immunohistochemistry as previously described (11, 12) (SI Methods). Quantification of pSTAT5 labeling in the MPOA of lactating Prlr^{lox/lox} ($n = 4$ –8) mice was undertaken by counting the total number of pSTAT5-labeled nuclei in two sections per animal. Sections were anatomically matched between each different animal.

Images were collected with a Zeiss Plan-Apochromat 10 \times objective (or 20 \times for the inset figures in Fig. 1 D–F) using the Axio Imager M2 microscope with a motorized stage and filters for fluorescent dyes (Zeiss Fs 43, AHF Analy-sentechnik F36-526, and F36-500 for Cy3, Alexa488, and Hoechst, respectively). The MozaiX module in the AxioVision software (Zeiss) was used to acquire whole brain images. Briefly, the area containing a brain section was defined, focus was adjusted manually, the area was scanned with three filters, and individual images in the area were stitched together automatically.

ACKNOWLEDGMENTS. We thank Kendra Boyes and Hsin-Jui (Regina) Lien for completing the video analysis of behavior, and Dr. Hermans-Borgmeyer (Transgenic Animals Service Group, Center for Molecular Neurobiology) for ES cell work. This work was supported by Health Research Council of New Zealand Grant HRC 14/568, Marsden Grant 16-UOO-236 from the Royal Society of New Zealand, German Federal Ministry of Education and Research Grant BMBF NZL 12-011, and Deutsche Forschungsgemeinschaft Grant SFB 894.

- Rosenblatt JS (1967) Nonhormonal basis of maternal behavior in the rat. *Science* 156:1512–1514.
- Numan M, Woodside B (2010) Maternity: Neural mechanisms, motivational processes, and physiological adaptations. *Behav Neurosci* 124:715–741.
- Tsuneoka Y, et al. (2013) Functional, anatomical, and neurochemical differentiation of medial preoptic area subregions in relation to maternal behavior in the mouse. *J Comp Neurol* 521:1633–1663.
- Dulac C, O'Connell LA, Wu Z (2014) Neural control of maternal and paternal behaviors. *Science* 345:765–770.
- Bridges RS (2015) Neuroendocrine regulation of maternal behavior. *Front Neuroendocrinol* 36:178–196.
- Stocco C, Telleria C, Gibori G (2007) The molecular control of corpus luteum formation, function, and regression. *Endocr Rev* 28:117–149.
- Lucas BK, Ormandy CJ, Binart N, Bridges RS, Kelly PA (1998) Null mutation of the prolactin receptor gene produces a defect in maternal behavior. *Endocrinology* 139:4102–4107.
- Binart N, et al. (2000) Rescue of preimplantatory egg development in prolactin receptor-deficient mice after progesterone administration. *Endocrinology* 141:2691–2697.
- Bridges RS, DiBiase R, Loundes DD, Doherty PC (1985) Prolactin stimulation of maternal behavior in female rats. *Science* 227:782–784.
- Bridges RS, Numan M, Ronsheim PM, Mann PE, Lupini CE (1990) Central prolactin infusions stimulate maternal behavior in steroid-treated, nulliparous female rats. *Proc Natl Acad Sci USA* 87:8003–8007.
- Brown RS, et al. (2016) Conditional deletion of the prolactin receptor reveals functional subpopulations of dopamine neurons in the arcuate nucleus of the hypothalamus. *J Neurosci* 36:9173–9185.
- Brown RS, Kokay IC, Herbison AE, Grattan DR (2010) Distribution of prolactin-responsive neurons in the mouse forebrain. *J Comp Neurol* 518:92–102.
- Grattan DR, LeTissier P (2015) Hypothalamic control of prolactin secretion, and the multiple reproductive functions of prolactin. *Knobil and Neill's Physiology of Reproduction*, eds Plant TM, Zelesnik AJ (Elsevier, Amsterdam), 4th Ed, Vol 1, pp 469–526.
- Brown RS, Herbison AE, Grattan DR (2011) Differential changes in responses of hypothalamic and brainstem neuronal populations to prolactin during lactation in the mouse. *Biol Reprod* 84:826–836.
- Candlish M, De Angelis R, Götz V, Boehm U (2015) Gene targeting in neuroendocrinology. *Compr Physiol* 5:1645–1676.
- Wen S, et al. (2011) Genetic identification of GnRH receptor neurons: A new model for studying neural circuits underlying reproductive physiology in the mouse brain. *Endocrinology* 152:1515–1526.
- Vong L, et al. (2011) Leptin action on GABAergic neurons prevents obesity and reduces inhibitory tone to POMC neurons. *Neuron* 71:142–154.
- Larsen CM, Grattan DR (2010) Prolactin-induced mitogenesis in the subventricular zone of the maternal brain during early pregnancy is essential for normal postpartum behavioral responses in the mother. *Endocrinology* 151:3805–3814.
- Kuroda KO, Tsuneoka Y (2013) Assessing postpartum maternal care, alloparental behavior, and infanticide in mice: With notes on chemosensory influences. *Methods Mol Biol* 1068:331–347.
- Douglas AJ, Leng G, Russell JA (2002) The importance of oxytocin mechanisms in the control of mouse parturition. *Reproduction* 123:543–552.
- McKinley MJ, et al. (2015) The median preoptic nucleus: Front and centre for the regulation of body fluid, sodium, temperature, sleep and cardiovascular homeostasis. *Acta Physiol (Oxf)* 214:8–32.
- McHenry JA, et al. (2017) Hormonal gain control of a medial preoptic area social reward circuit. *Nat Neurosci* 20:449–458.
- Numan M, Sheehan TP (1997) Neuroanatomical circuitry for mammalian maternal behavior. *Ann N Y Acad Sci* 807:101–125.
- Stolzenberg DS, Numan M (2011) Hypothalamic interaction with the mesolimbic DA system in the control of the maternal and sexual behaviors in rats. *Neurosci Biobehav Rev* 35:826–847.
- Soares MJ (2004) The prolactin and growth hormone families: Pregnancy-specific hormones/cytokines at the maternal-fetal interface. *Reprod Biol Endocrinol* 2:51.
- Wu Z, Autry AE, Bergan JF, Watabe-Uchida M, Dulac CG (2014) Galanin neurons in the medial preoptic area govern parental behaviour. *Nature* 509:325–330.
- Scott N, Prigge M, Yizhar O, Kimchi T (2015) A sexually dimorphic hypothalamic circuit controls maternal care and oxytocin secretion. *Nature* 525:519–522.
- Thomas SA, Palmiter RD (1997) Impaired maternal behavior in mice lacking norepinephrine and epinephrine. *Cell* 91:583–592.
- Lerch-Haner JK, Frierson D, Crawford LK, Beck SG, Deneris ES (2008) Serotonergic transcriptional programming determines maternal behavior and offspring survival. *Nat Neurosci* 11:1001–1003.
- Zack GW, Rogers WE, Latt SA (1977) Automatic measurement of sister chromatid exchange frequency. *J Histochem Cytochem* 25:741–753.
- Rodríguez CI, et al. (2000) High-efficiency deleter mice show that FLPe is an alternative to Cre-loxP. *Nat Genet* 25:139–140.
- Rodríguez I, Feinstein P, Mombaerts P (1999) Variable patterns of axonal projections of sensory neurons in the mouse vomeronasal system. *Cell* 97:199–208.